

NURMIJÄRVI

In English



Space to live and to grow in the Helsinki region



Welcome to Nurmijärvi

Choose the kind of environment that you prefer to live in: an urban area close to services, or a rural environment close to nature.

Enjoy the recreational facilities on offer: there are cultural and other events – also for tourists, and there are possibilities to exercise and enjoy nature almost outside your own front door. Services from the Helsinki Metropolitan Area add to the offering.

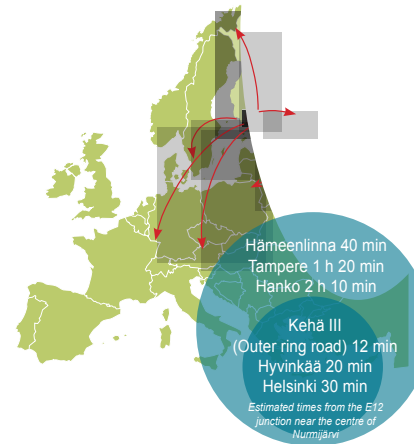
Benefit from a wide range of services that take into account your life situation: from early childhood to basic education and further training, and later on, elderly people are offered a high standard of care.

Your business will be ideally located, making logistics easy to arrange: a short distance from the ports and airport, you'll benefit from good road communications in both east-west and north-south directions, while being away from the rush.

Choose your workplace and your journey to work: apart from your own municipality, the Helsinki Metropolitan Area and the municipalities to the north are near neighbours.

Nurmijärvi offers all this – a large enough municipality to be able to provide the necessary services and infrastructure for modern life, as well as to grow and develop continuously, but still small enough to provide a living space at a competitive cost. It is the municipality that is located "at the centre".

Nurmijärvi – the name means "Lawn Lake" in Finnish – was drained to provide arable land partly in the 1920s, and the work was completed in the early 1950s. As a municipality, Nurmijärvi arose from the parish that was founded in 1775. Before that Nurmijärvi was already an independent congregation as long ago as in 1605. Hyvinkää separated off to become an independent municipality in 1917.



General facts	Main population centres
<ul style="list-style-type: none"> • Surface area: 367 km² • Inhabitants: over 40 000 • Under 15-years old: 25 % 	<ul style="list-style-type: none"> • Klaukkala: 40 % • Nurmijärvi centre: 20 % • Rajamäki: 18 %



Nurmijärvi centre



Klaukkala



Rajamäki



A safe environment, with space to live



In Nurmijärvi you can live in an urban area close to services, or in the countryside, close to nature.

Three-quarters of the population of Nurmijärvi live in urban areas. A general picture of the municipality is of a peaceful and close-to-nature community with distinctive village-like population centres. The population centres are separated by kilometres of open landscape, with meadows, meandering streams, and forests on their solid bedrock. Studies have shown that residents appreciate the secure life that Nurmijärvi offers.

Organic growth and new arrivals

Nurmijärvi has grown due to inward migration for several decades. The prices of both ready accommodation and building plots are lower than those in the heart of the metropolitan area, and the pace of life is calmer. For these reasons a good many families with small children have chosen to live at Nurmijärvi. About a quarter of the inhabitants are under 15 years of age. A significant proportion of the population growth is also due to the birth rate.



40 000
nurmijärveläistä

A central location in Uusimaa

From Nurmijärvi it is a short journey in any direction. It takes just over half an hour to drive to Helsinki or, in the other direction, to Hämeenlinna. Almost all of Uusimaa is within a radius of about 50 km. When you live in Nurmijärvi, a change of workplace does not mean that you immediately have to think about moving.

Public transport is a good alternative

With a Nurmijärvi-ticket, you can save on your journeys to and from work. The ticket entitles the holder to reduced regional ticket prices throughout the Helsinki metropolitan area. Nurmijärvi's own "Kivenkyyti" bus service provides transportation within the municipality.





Close proximity and available services



Nurmijärvi offers a wide range of services for residents of all ages.



For the youngest Nurmijärvi residents, ante- and postnatal care is provided through maternal and child health clinics.

The services needed during early childhood include day-care centres, pre-school and family day-care, as well as open services to help the child's development. Families that opt for private day care, as well as those that wish to look after their children at home, are entitled to benefits from the municipality.

The road to school

Across the breadth of Nurmijärvi there are a lot of schools. The number of families with children is growing, and new schools and day-care centres are being built to keep pace. School transportation is arranged to cover the whole municipality.

From primary school to matriculation

After completing basic education pupils can continue their studies at one of the

municipality's upper secondary schools, at Rajamäki, Nurmijärvi centre or Klaukkala. In addition, the school at Klaukkala offers adults the opportunity to study at upper secondary school level.

Opportunities for further study

Options for vocational studies include Nurmijärvi Vocational College, part of the Keuda consortium, which provides vocational training throughout Central Uusimaa. Alternatively, the Humanities University of Applied Sciences (HUMAK) training unit operates at the Kiljava Institute with its rich traditions.

Adult education, including professional training and courses for young people, is offered at the TTS research, development and training institute at Rajamäki. There is an extensive range of courses leading to basic, professional or specialist qualifications.

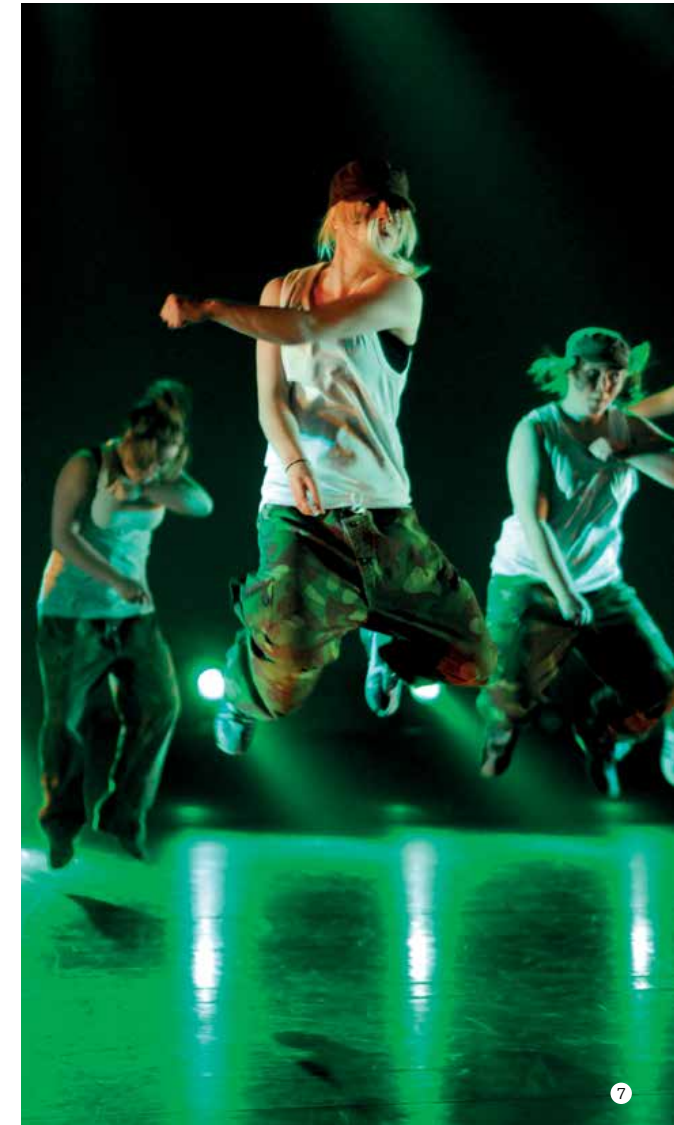
Self-education and learning as a hobby

Whether you want to know more, or just temporarily disconnect from a knowledge-intensive working life, there are good opportunities close to home. The municipality's own schools of music, dance and visual arts, as well as the folk high school, organize courses in many different fields. Learning can be a hobby in itself.

Health care and support

Nurmijärvi people enjoy a high standard of health care. The municipality's health centre provides primary health care services in the main population centres (Nurmijärvi centre, Klaukkala and Rajamäki). The round-the-clock care of elderly patients is concentrated at Nurmijärvi centre.

For elderly people requiring some level of support both assisted living facilities and private nursing homes are available. For those who continue to live in their own home, support is available during the daytime in the form of short-term care and stimulating activities in a home-like environment.





Work and business



Nurmijärvi pleases both the employer and the employee.



Visualizations: Arkkitehdit LSV Oy



Local companies are active in many fields and this is reflected in the diversity of job options available. The companies benefit from a good operating environment, especially suitable for those with operations that require a lot of space.

Successful businesses

The municipality has about 3 000 companies and jobs for more than 11 000. The services sector absorbs the greater part of the workforce. The biggest employer is the municipality with about 2 500 professionals working in different fields.

The biggest employer apart from the municipality is Altiä's Rajamäki factory, producing and packaging alcoholic beverages. Altiä's association with Nurmijärvi started more than a hundred years ago, when the village of Rajamäki started to grow out around the factory. Rajamäki is also the home of the Teknos powder coating factory, which is the largest of its kind in the Nordic countries.

The majority of the services jobs within private companies are in the fields of transport (Kiitosimeon and Korsisaari) or training (TTS research,

development and training institute). Trade and construction are also important sources of employment.

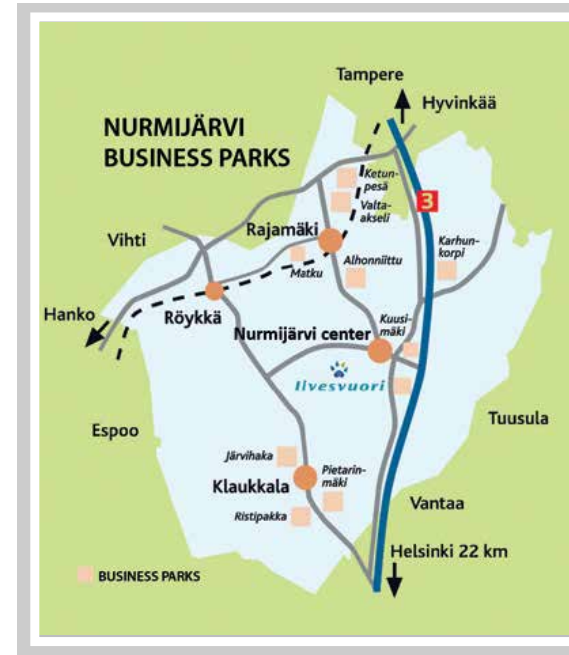
A good place for the entrepreneur

At Nurmijärvi there is a growing development of workplaces, a business-friendly atmosphere, and good services to help businesses establish themselves and maintain their operations. Skilful staff can be found within the municipality and in the close vicinity. There are several business parks, and they are located next to major routes. The most significant of these is the Ilvesvuori Business Park, beside the Helsinki-Tampere motorway. After its extension is complete it will cover approximately 150 hectares.

As with housing, the price levels for running a business in Nurmijärvi are lower than those in the heart of the metropolitan area.

Logistically, the ideal location

Due to its central location Nurmijärvi is close to the market and an ideal place regarding transportation. Right from the



company gate there is delay-free access to an excellent road system. Vuosaari harbour (Port of Helsinki) is about half an hour away from the Ilvesvuori Business Park, and Helsinki Vantaa Airport can be reached in less than half an hour. The flow of goods in both inwards and outwards directions is fast and smooth, and the short distances involved make Nurmijärvi a most environmentally friendly business location.

Markets nearby

The entire population of Uusimaa – one and a half million people – are easily accessible from Nurmijärvi, and within a roughly 100 km radius circle there are many other areas with strong purchasing power. The broad population base within the municipality provides excellent opportunities for a broad range of services.





Free time, nature and culture



Nurmijärvi offers varied leisure activities and entertainment.

Nurmijärvi does literally provide you with space to move. The municipality has a hundred and fifty places for sports or exercise participation and a spacious landscape for hiking and other fresh air activities.

Outdoor trails and roaring rapids

Nurmijärvi has a lot of outdoor areas and routes. In the Kiljavannummi area you can enjoy year-round hiking. Sääksjärvi Lake has a fine sandy beach at Kiljava for swimmers, and there are also sports and cafeteria services. In the winter a network of ski trails is prepared. Klaukkala Tornikeskus is another big attraction for winter sports enthusiasts. In summer the area attracts downhill bikers.

The Seven Brothers Trail cuts right across the municipality from Palojoki, the birthplace of Aleksis Kivi, from Kiljava to the Sveitsi outdoor centre at Hyvinkää.

The most handsome of Nurmijärvi's waterfalls are Myllykoski and Nukarinkoski on the River Vantaa.

These areas are popular with fishermen and canoeists.

Golf and riding

Other popular forms of exercise are golf and riding. There are a number of riding schools in Nurmijärvi.

Indoor sports are available at bowling alleys, ice rinks and the public swimming pool.

Home of Finland's national writer

Nurmijärvi is known as the birthplace of Finland's national writer, **Aleksis Kivi**. He was born in the village of Palojoki on 10th October 1834. The house in which he was born is now a museum.

Aleksis Kivi's former home at Palojoki is situated right next to the Taaborinvuori museum area, where there are exhibitions of cottage crafts illustrating day-to-day life in the 19th and early 20th centuries.

Taaborinvuori is an area of natural beauty and worth visiting even outside



the museum's opening hours. Various cultural events are organized in the area during the summer months. The Taaborinvuori summer embraces theatre, music, and visual arts, and for families' younger members there are the special events of the Taabor Activity Weeks.

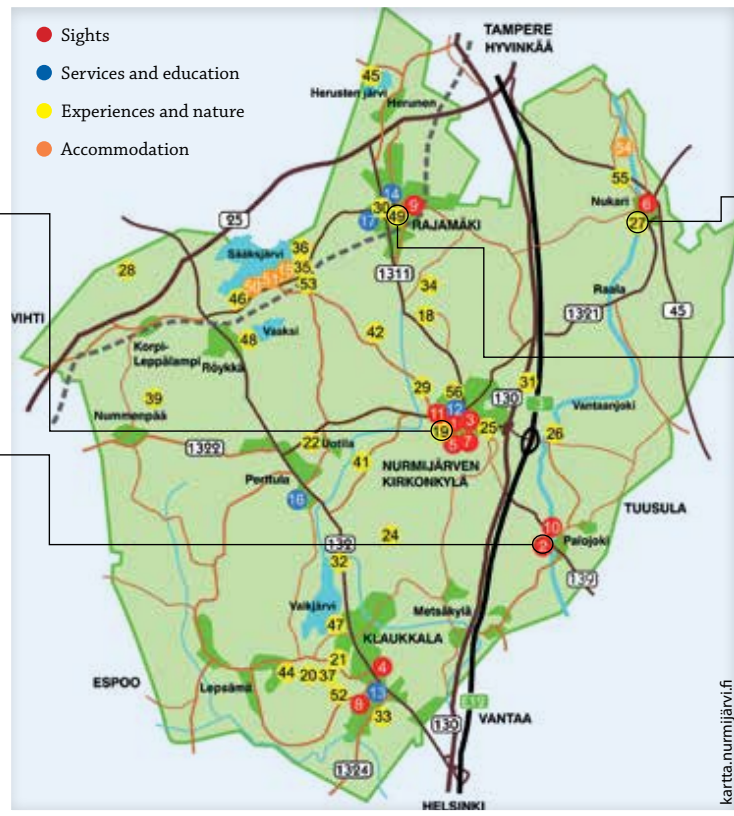
The oldest of Finland's summer events arranged by amateur and voluntary participation is the Kivi-juhlat Festival, and at this, Kivi's plays have been performed at Taaborinvuori every year since 1953.

Libraries and the visual arts

At the village of Nukari there is a nostalgic School Museum, which contains items from a number of Nurmijärvi schools. The site of the museum is the village school founded by Matilda Adlercreutz in 1873.

Nurmijärvi has three libraries. The main library is located in Nurmijärvi centre and there are branch libraries at Klaukkala and Rajamäki. In addition, residents are served by the Sepeteus mobile library. The Aleksis Kivi room at the main library contains a collection of materials relating to the national writer. Paintings are exhibited at the main library's Galleria Ville, where cultural services organize several art exhibitions each year.





Sights

- 1 Aleksis Kivi statue
- 2 Aleksis Kivi birthplace
- 3 Aleksis Kivi room
- 4 Klaukkala church
- 5 Museum cafeteria
- 6 Nukari school museum
- 3 Galleria Ville
- 7 Nurmijärvi church
- 2 Wood carver's workshop
- 8 St. Nektarios' church
- 9 Rajamäki church
- 10 Taaborinvuori museum area
- 11 Nurmijärvi Museum of Art

Services and education

- 12 Nurmijärvi municipal hall
- 13 Klaukkala library
- 3 Nurmijärvi main library
- 14 Rajamäki library
- 15 Kiljava Institute
- 16 Keuda Nurmijärvi
- 17 TTS research, development and training institute

Experiences and nature

- 18 Alhoniittu outdoor area
- 52 Ali-Olli Alpaca farm

- 56 Bowling House
- 25 Frisbee golf course,
- Maaniittu-Ihantola exercise park
- 30 Frisbeegolf course,
- Rajamäki exercise park
- 34 Ketola ostrich farm
- 20 Klaukkala indoor ice rink
- 21 Klaukkala sports area
- 24 Lähilampi Caravan

- 25 Maaniittu-Ihantola exercise park
- 26 Myllykoski outdoor area
- 27 Nukarinkoski outdoor area
- 28 Nurmijärvi Golf Centre
- 29 Parkkimäki outdoor area and Nurmijärvi centre sports field

- 30 Rajamäki exercise park
- 31 Ruusulinna
- 19 Juha Theatre Cinema
- 33 Tornikeskus
- 35 Sääksi caravan area
- 36 Sääksjärvi and Kiljavan-nummi outdoor area
- 37 Indoor tennis- and squash courts



For horseback riding

- 39 Dynur Icelandic horse stable
- 55 Minzun issikka stable
- 42 Nurmijärvi riding school
- 41 Perttula riding centre
- 44 Solbacka riding school
- 22 Uotila riding school
- 53 Vuonotali Solsikke stable

Swimming

- 45 Herunen swimming area
- 46 Röykkä swimming area
- 35 Sääksjärvi beach
- 47 Tiira beach
- 48 Vaaksi swimming area
- 49 Rajamäki swimming pool

Accommodation

- 32 Holma course centre
- 50 Haukilampi well-being centre
- 34 Ketola ostrich farm
- 15 Kiljavanranta Hotel
- 51 Kotoranta holiday home
- 54 Nukari holiday cottages
- 53 Vuonotali Solsikke stable

NURMIJÄRVI MUNICIPALITY

PO Box 37 (Keskustie 2 B) FI-01901 Nurmijärvi, Finland

Tel: +358 9 250 021

email: kunta@nurmijarvi.fi

www.nurmijarvi.fi